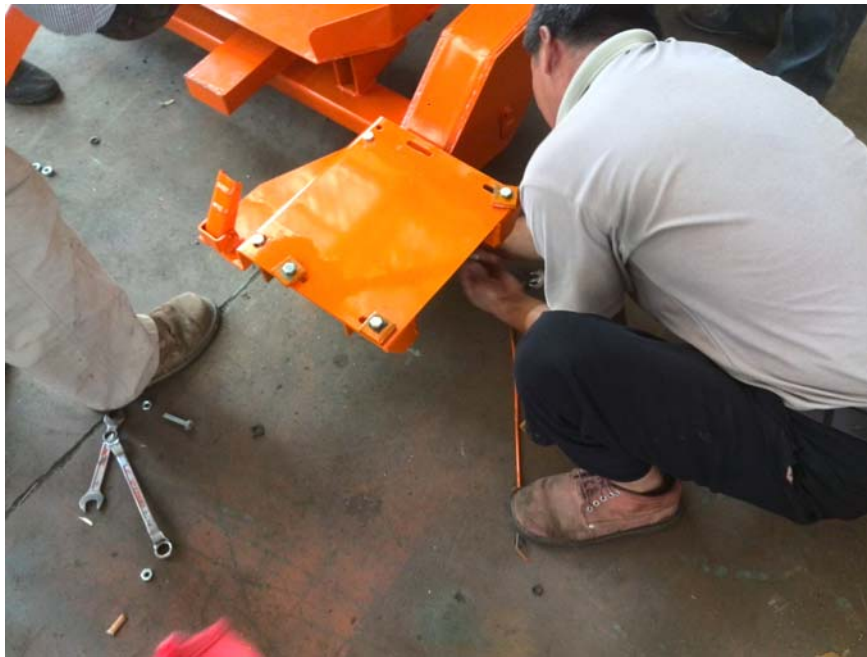
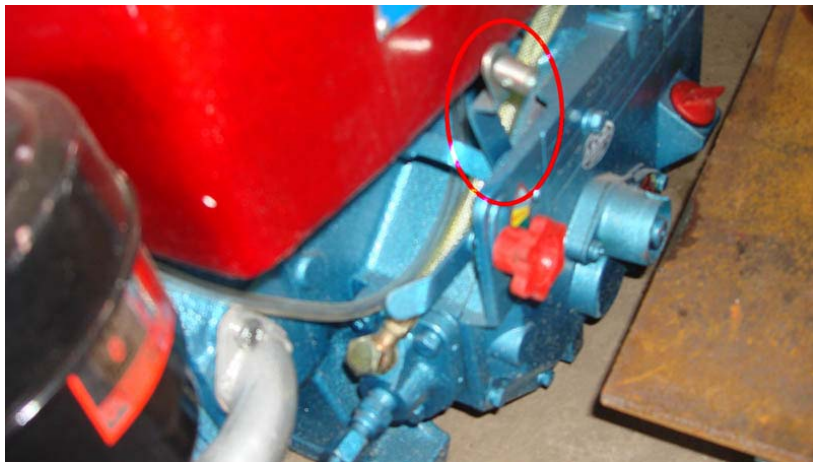


1.Assembling of diesel engine, clutch pulley, pulley belt and clutch line.





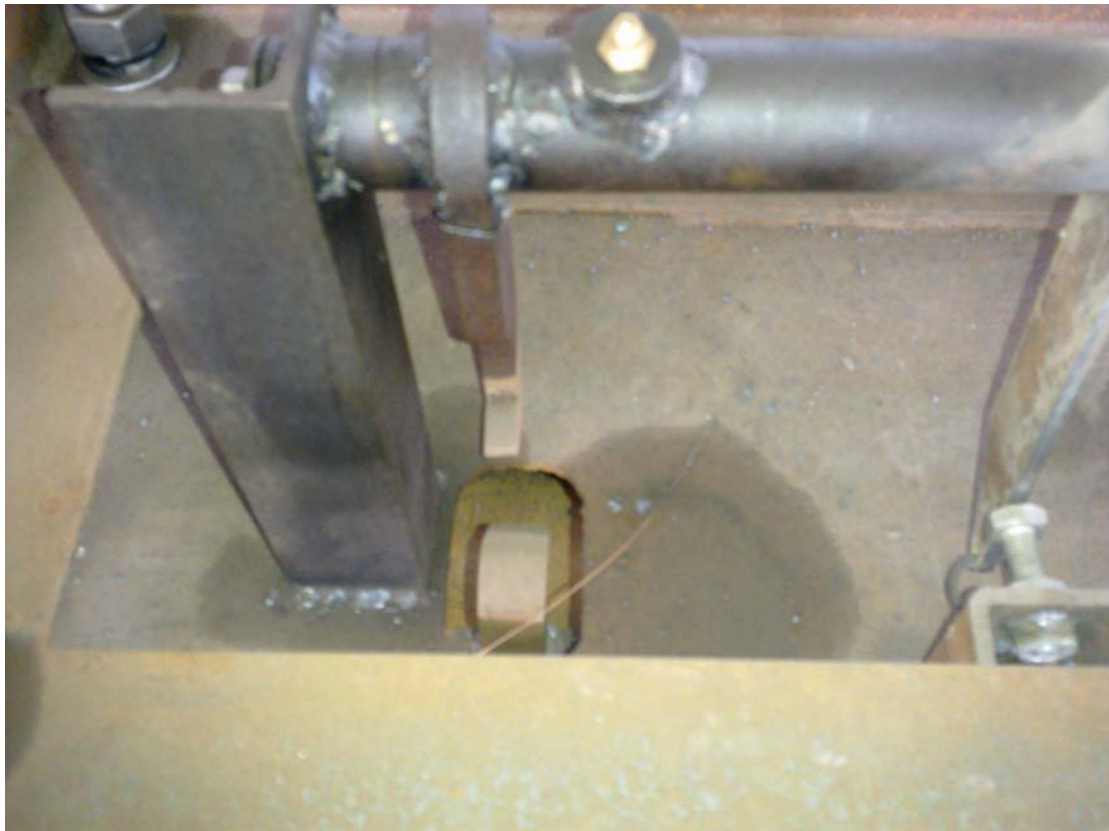


2.Upper mould releasing system and lower mould lifting system





The other side of spring hooks the hole of steel plate.



Lift the upper mould until the frame hook hooks the upper mould. The upper mould releasing handle will be reset at the same time.



Lower mould lifting system(handle with counterweight at both sides)



